

WELCOME TO THE April 16TH , 2025 MEETING OF THE OVMRC



Agenda

- Greetings and special welcome to guests, new hams and new members to the Club.
- Acceptance of the March meeting minutes published in the April Rambler.
- A moment of Remembrance for:
Joe Parkinson VE3JG, John Barnhardt VE3ZOV and Clare Fowler VE3NPC
- Presentation on June Field Day, Plans and Preparation
- Chairpersons Reports
- Other business that may arise.
- Door Prizes
- Formal meeting adjournment.
- Social session following meeting adjournment. Coffee, donuts.



June 28-29 start: 2pm Saturday
for 24 hrs

Field Day Objective:

To contact as many stations as possible on the 160, 80, 40, 20,15 and 10 Meter HF bands, as well as all bands 50 MHz and above, and to learn to operate in abnormal situations in less than optimal conditions.

<http://www.arrl.org/field-day#rules>

Classes of Operation

Class A Normal Club/Group Operation with 3 or more persons on emergency power.

Class A /Battery - Same as above but limited to 5 watts and battery/natural power.

Class B Portable Operation away from home as an Individual or 2 person group.

Class B/Battery - Same as above but limited to 5 watts and battery/natural power.

Class C Mobile Operation in a vehicle (car, boat, plane etc.)

Class D Operation at Home using commercial power. *Use of home antennas permitted.*

Class E Operation at Home using emergency power. *Use of home antennas permitted.*

Class E/Battery – Same as above but limited to 5 watts and battery/natural power.

Class F Operation from an Emergency Operations Centre (EOC)

Classes A and F are not be available for individual entries.

Note: All Battery operations can be also supported by solar or other natural power for charging. Battery charging is not permitted from commercial power during the operational period. All battery operations require you use QRP limitation of 5 watts or less during the entire operation. (this gives you a multiplier of 5 for each contact).

Your “Class” must be transmitted to the other FD station you are communicating with to complete a FD contact.

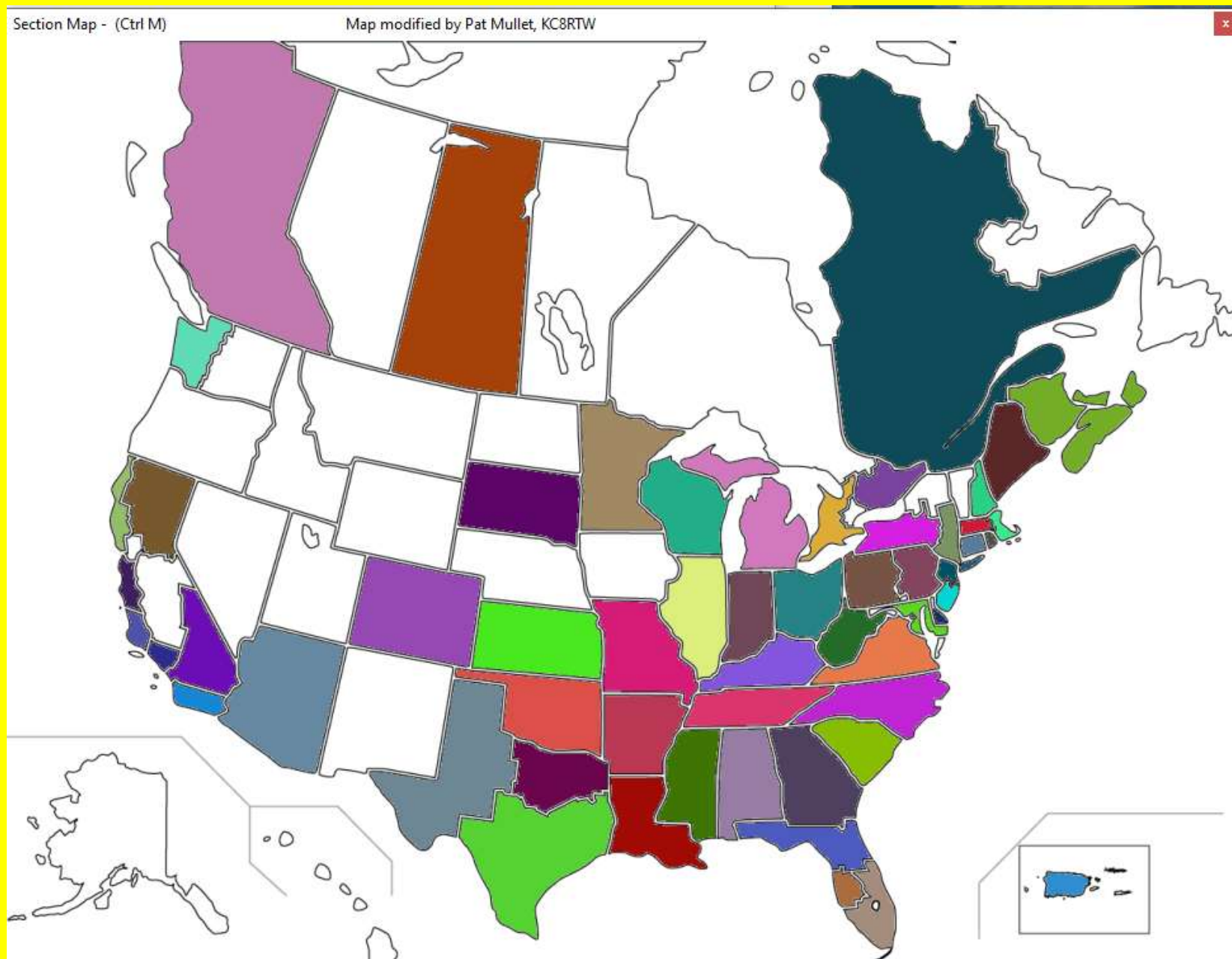
Sections:

The second element of information you must communicate to another FD station is your "Section". There are a total of **84** different ARRL/RAC sections in North America and for contacts elsewhere, these are given a **DX** section designation.

DX	3	5	7	0
DX	DE MDC	AR NTX	AK NV	CO MO
1	EPA WPA	LA OK	AZ OR	IA ND
CT RI	4	MS STX	EWA UT	KS NE
EMA VT	AL SC	NM WTX	ID WWA	MN SD
ME WMA	GA SFL	6	MT WY	Canada
NH	KY TN	EB SCV	8	AB NT
2	NC VA	LAX SDG	MI WV	BC ONE
ENY NNY	NFL VI	ORG SF	OH	GTA ONN
NLI SNJ	PR WCF	PAC SJV	9	MAR ONS
NNJ WNY		SB SV	IL WI	MB PE
			IN	NL QC
				SK

View of Sections Worked

Sure would be nice to Work All Sections (Clean Sweep)



The Elements of Communications exchange is:

- **Your Call Sign**
- **Your “Class” of Operation**
- **Your “Section”**

All contacts must be “logged” either on a Paper Form or by Computer Application.

And no station (with the same call sign) can be worked more than once on the same band and mode during the 24 hour operational period.

Typical Exchange may go like this:

Station W1AW calling CQ Field-Day:

- **“CQ Field Day, CQ Field Day, this is W1AW, Whiskey 1 Alpha Whiskey”**

Station Responding VE3JW:

- **“W1AW this is VE3JW, Victor-Echo-Three-Juliette-Whiskey” or more simply, just your call sign “V-E-3-Juliette-Whiskey” .**

W1AW responds:

- **“VE3JW please copy 1-Delta Connecticut”**

VE3JW responds:

- **QSL, 1-Delta Connecticut, please copy “1-Echo Ontario East, (Oscar November Echo)”**

W1AW responds:

- **VE3JW, QSL 73 --- CQ Field Day, CQ Field Day, W1AW, Whiskey-1-Alpha-Whiskey**

Points Multipliers:

QSO Points

- Each **Phone (voice)** contact counts **1 point each**
- Each **CW (Morse)** contact counts **2 points each**
- Each **Digital mode** contact counts **2 points each**

Power Multipliers:

- **5 X multiplier** for each contact if all contacts are **5 watts (RF) or less** and **if not using commercial power or power derived a motor-driven generator** (example power from batteries, solar, or other natural sources).
- **2 X multiplier** for each contact using 5 watts (RF) or less **if power is derived from commercial power** to operate directly or charge batteries that power the equipment anytime during the operating period.
- **2 X multiplier** for each contact using 100 watts (RF) or less.

Note for this year, Class D and E stations can not use more than 100 watts.

Calculation for Contacts running 5 watts or less on batteries with solar charging battery charging power through out the 24 hour operating period:

Each phone contact equals 5 points

Each CW or Digital contact equals 10 points

Bonus Points: *these add to your contact score*

- 100 points for **100% Emergency Power**- All Classes except D
- 100 points for 5 contacts on **Natural (Solar) Power** – All Classes except D
- 100 points for **Set Up in Public Place** – Not available to Classes C, D or E
- 100 points for **Public Info Table** – Not available to Classes C, D, or E
- 100 points for **Copying FD Message** – All Classes *
- 100 points for **Message to RAC Section Manager by Amateur Radio** **
- 100 points for **Satellite Contact (1 only on FM Bird)** – Not available Classes C, D and E
- 100 points for **Invitation of Elected Official**
- 100 points for **Visit by Served Agency like Red Cross, St John's Ambulance**
- 100 points for **Safety Officer** – Only available to Class A
- **Get-on-the-Air (GOTA)** points – Only available to Classes A & F
- 100 points for **Social Media** postings – Available all Classes
- 50 points for using **ARRL Web App Submission**

* Sent by W1AW on CW and PSK 31 according to their published schedule

**Use Winlink Radio E-mail Service, Our Section Mgr is Mike Hickey, ve3ipc@gmail.com

Sample of a Paper Log Form



Field Day Log

page _____ of _____

Call Used

Exchange Sent

[illegible]

N3FJP Field Day Logging Software (<https://www.n3fjp.com/>)

N3FJP's ARRL Field Day Contest Log 6.3
www.n3fjp.com

File
Settings
Band
Mode
View
Network
Operator
Help

☐ Current Band & Mode

Recent Contacts

☐ Last 20
☒ All

Rec	Call	Class	Sec	Date / Time	Bnd	Mode	Country	Initi...	Opera...
301	W4KD	1B	OH	06-28 17:59	20	CW	USA	NR	VE3LC
300	K8TW	1D	OH	06-28 17:58	20	CW	USA	NR	VE3LC
299	N8DM	1D	WCF	06-28 17:56	20	CW	USA	NR	VE3LC
298	K3AU	1E	MDC	06-28 17:53	20	CW	USA	NR	VE3LC
297	NR4M	3A	VA	06-28 17:52	20	CW	USA	NR	VE3LC
296	AG9A	1D	IL	06-28 17:49	15	CW	USA	NR	VE3LC
295	NG5M	1A	AR	06-28 17:48	15	CW	USA	NR	VE3LC
294	K5RT	2D	NTX	06-28 17:47	15	CW	USA	NR	VE3LC
293	K8PK	1D	OH	06-28 17:46	15	CW	USA	NR	VE3LC
292	KR4F	1D	AL	06-28 17:45	15	CW	USA	NR	VE3LC

Total CW Contacts

250

Total Phone Contacts

3

Total DIG Contacts

48

Total QSO Points

599

QSOs / Hr (Last 20 min)

0

QSOs / Hr (Last 60 min)

0

Call

Class

Section

Ready to begin!

Please select your band and mode from the menu options!

Clear

Spot Last

Possible Duplicates

☒ Any Portion

Ontario North Total = 0

DX

1

CT

EMA

ME

NH

RI

VT

WMA

2

ENY

NLI

NNJ

NNY

SNJ

WNY

3

DE

EPA

MDC

WPA

4

AL

GA

KY

NC

NFL

PR

SC

SFL

TN

VA

VI

WCF

5

AR

LA

MS

NM

NTX

OK

STX

WTX

6

EB

LAX

ORG

PAC

SB

SCV

SDG

SF

SJV

SV

7

AK

AZ

EWA

ID

MT

NV

OR

UT

WWA

WY

8

MI

OH

WV

9

IL

IN

WI

0

CO

IA

KS

MN

MO

ND

NE

SD

Canada

AB

BC

GTA

MAR

MB

NL

NT

ONE

ONN

ONS

PE

QC

SK

Bearing:

Miles:

Band: 20

Mod CW

VE3LC

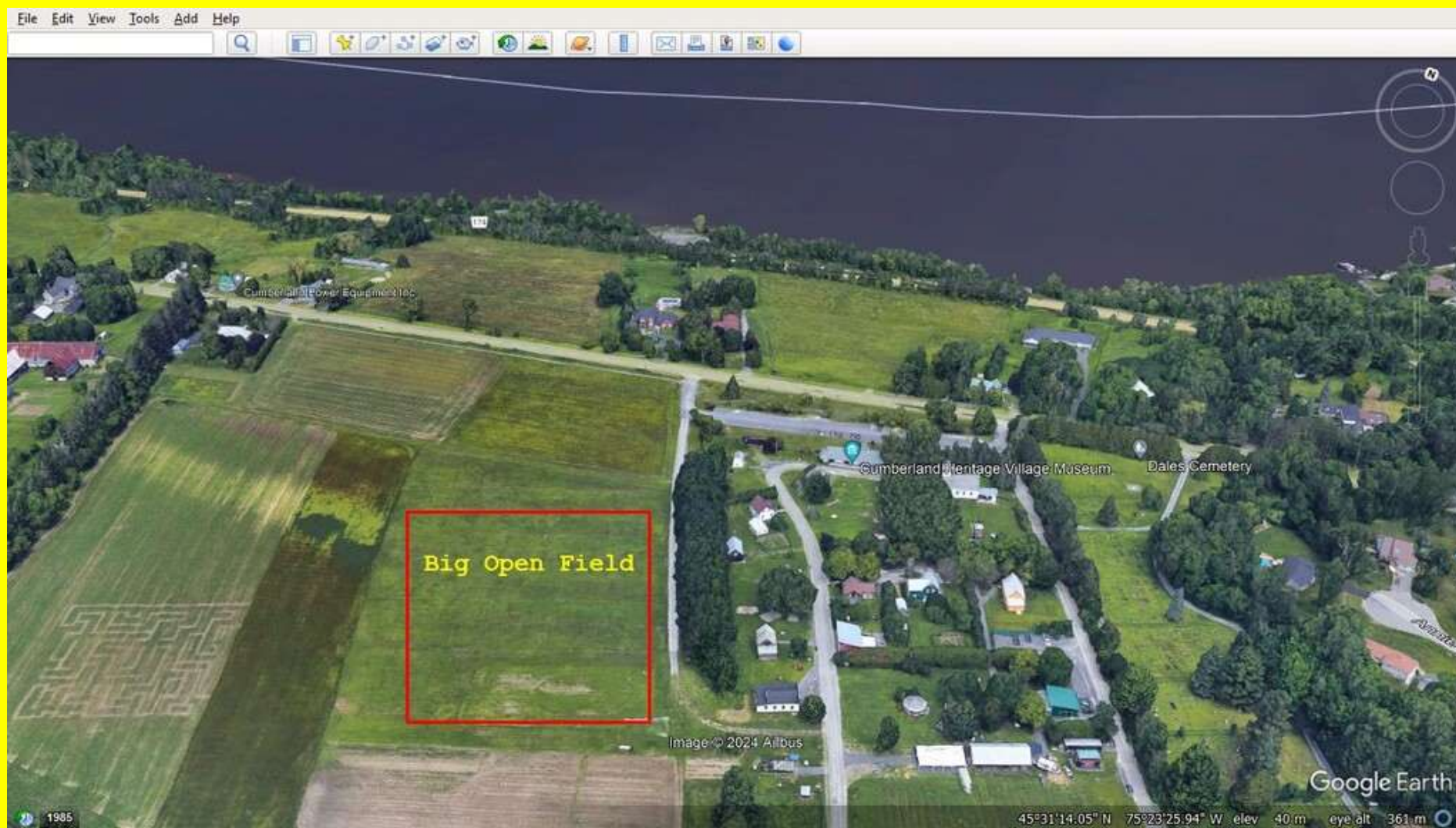
1E

ONE

2:02:24 PM

18:02:24 UTC

**Plan for OVMRC in the Field Once Again
Cumblerland Heritage Village
We are still awaiting permission to use the site.**

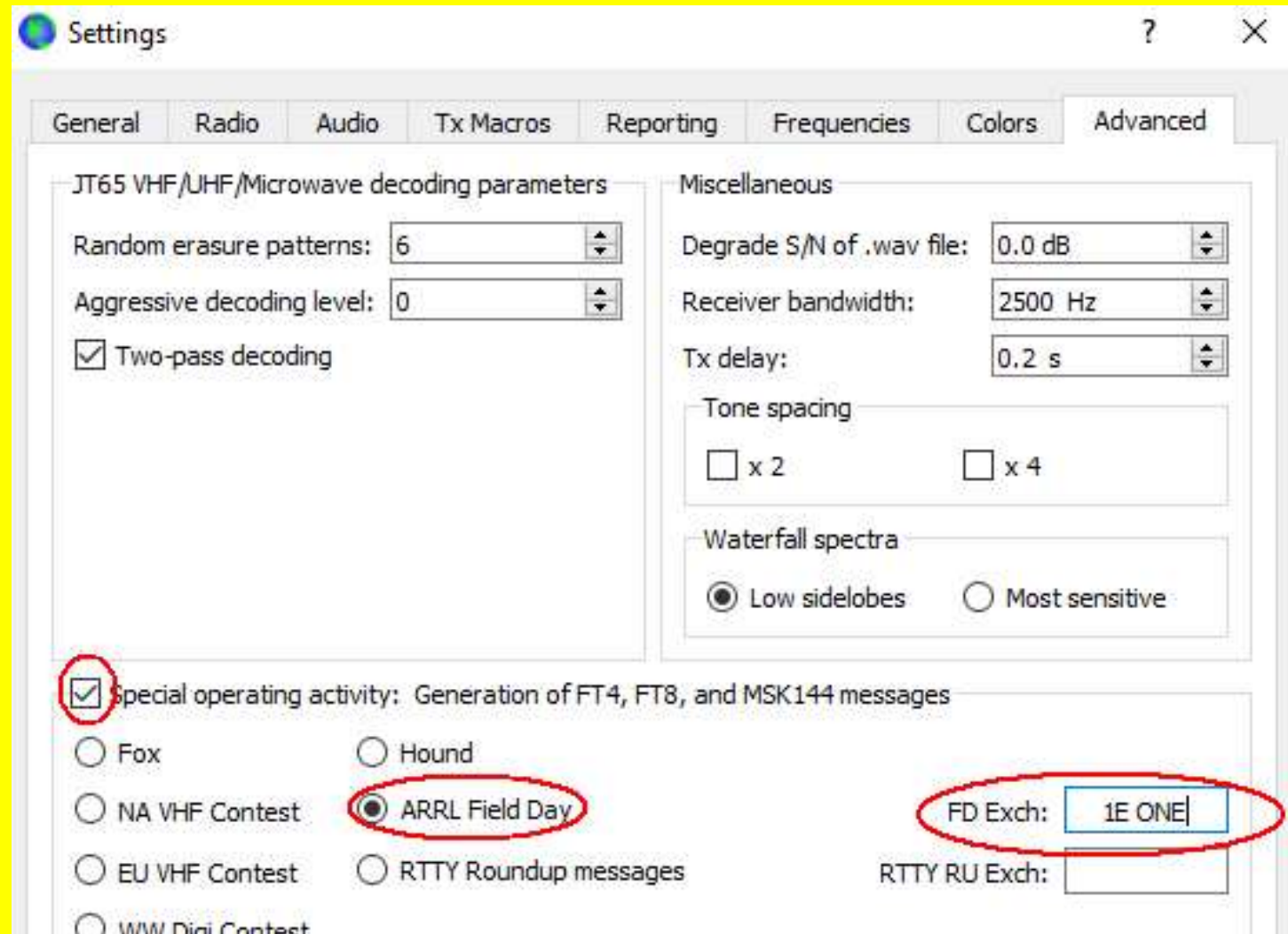


OVMRC Plans for Operating at the Cumblerland Heritage Village Museum

- **Class 2A operation (meaning 2 HF Stations) full time operation. The Call Sign used will be VE3JW**
- **All Station equipment running QRP (5 watts or less for a 5 times multiplier)**
- **All equipment running on batteries (preferably with solar charging) for daytime operation.**
- **FT4/FT8 and/or CW as much possible (as opposed to voice modes) – computers for data modes on battery power.**
- **GOTA Station (new hams ideally with a coach) Call sign used for GOTA will be VE3RAM**
- **Youth Participation Bonus = 18 or <, points making supervised contact.**
- **One or more VHF stations. One on 6 M using FT8 and hope for Sporadic E propagation**
- **All radios ideally IC-705 equipment – several 705 owners in club.**
- **Engagement with Public attending Museum – Amateur Radio Information**
- **Copy of FD message from ARRL Bonus – who to copy Friday before event?**
- **Visitation by elected official – local area councilor ? – who can arrange?**
- **Social Media Bonus – who can do?**
- **Local Media Bonus – (local newspaper article or broadcast media coverage)**
- **Site Safety Officer Bonus – who to do?**
- **Satellite Contact Bonus**
- **Education activity Bonus – some ham radio how to do.**
- **FD greeting msg Bonus by amateur radio from FD site to RAC Section Manager – Winlink.**
- **Food and refreshment.**

**Voice Only Hams on HF, consider using FT8-Digital or CW even if you don't know a Dit.
Each contact has a multiplier of TWO**

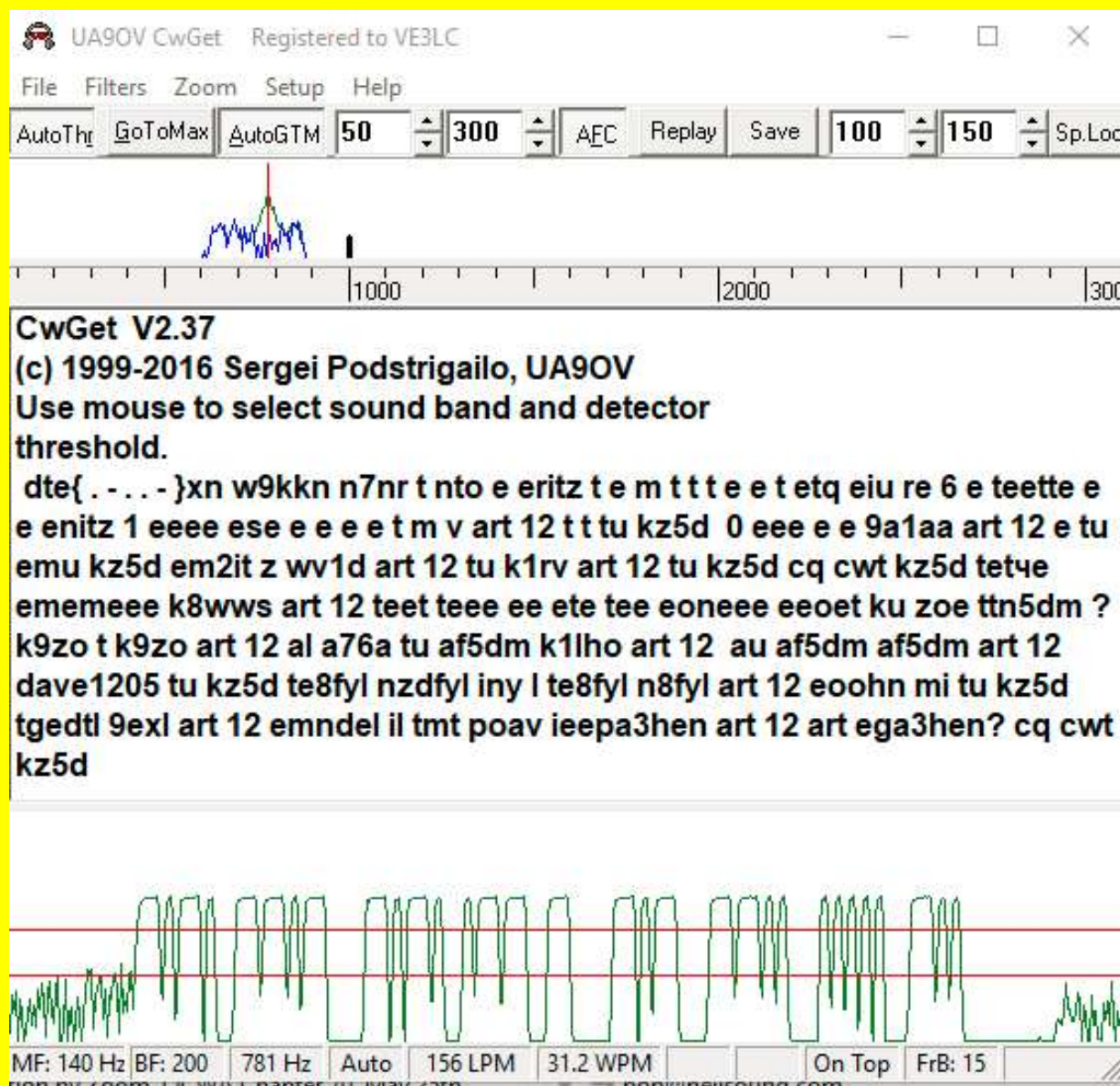
FT8-Using WSJT-X application is now designed to be Used on Field Day



If you are not proficient in CW then:

Get yourself set up with good Morse copy software:

CWGet: <https://www.dxsoft.com/en/products/cwget/>



And to send CW that Integrates with your Logging Software:

A WinKeyer USB

<https://hamcrafters2.com/WKUSBX.html>

[Home](#) [Keyer Kits](#) [ICs](#) [Radios](#) [PIC Tools](#) [Software](#) [Videos](#) [Deals](#)



WKUSB-SMT CW Keyer Assembled/Tested \$129



WinKeyer USB
www.k1el.com

SPEED

Click for more pictures

Excellent WKUSB video review by G0POT

[Add to Cart](#)

WKUSB Cable Options

Attention: We are not able to sell directly to EU or UK at this time. We are hoping to have a distributor set up there soon.

CW WinKey and F Key Macro Definitions for N3FJP Logging Software

CW Setup Form 1.2 (Ctrl W for this form or Ctrl > Shift W for the CW Mini form)

Com Port:

COM3
COM1
COM2

Keying Options

☐ None ☐ RTS ☒ Winkeyer ☐ DTR ☐ N3FJP API

Configure Winkeyer

Timing Options

☐ Sleep ☒ Timer ☐ Loop

Changing speeds will disable Winkeyer Speed Pot Lock

Word Character

WPM

Faster

29

Slower

More

0

Less

More

0

Less

Send F9 Characters:

Test

Description:

To use computer generated CW, first, you will have to build or purchase an interface to connect from your computer's serial port to your transmitter. Schematics and purchase options are available on my website (www.n3fjp.com).

Most folks only have USB ports now, but in most cases a USB to serial adapter will work fine. You'll find them on line or at your local Best Buy.

Alternatively, you can select the Winkeyer device, which will key your rig independently from your PC's processor, which is a great solution if your processor's code is erratic. There is also a Winkeyer USB version that will connect right to your PC's USB port. For more on Winkeyer, please visit www.k1el.com.

	Loop Sec				Lead (ms)	Tail (ms)		
F1	CQ DE VE3LC FI	0	F4	1E	F7	?	F10	SEC ?
F2	VE3LC	TSM - Tab	F5	ONE	F8	TU	F11	CLASS ?
F3	\$ TU 1E ONE	TSM - Enter	F6	AGN?	F9	VV DE VE3LC	F12	Keyboard

Your F Key Macro Definitions

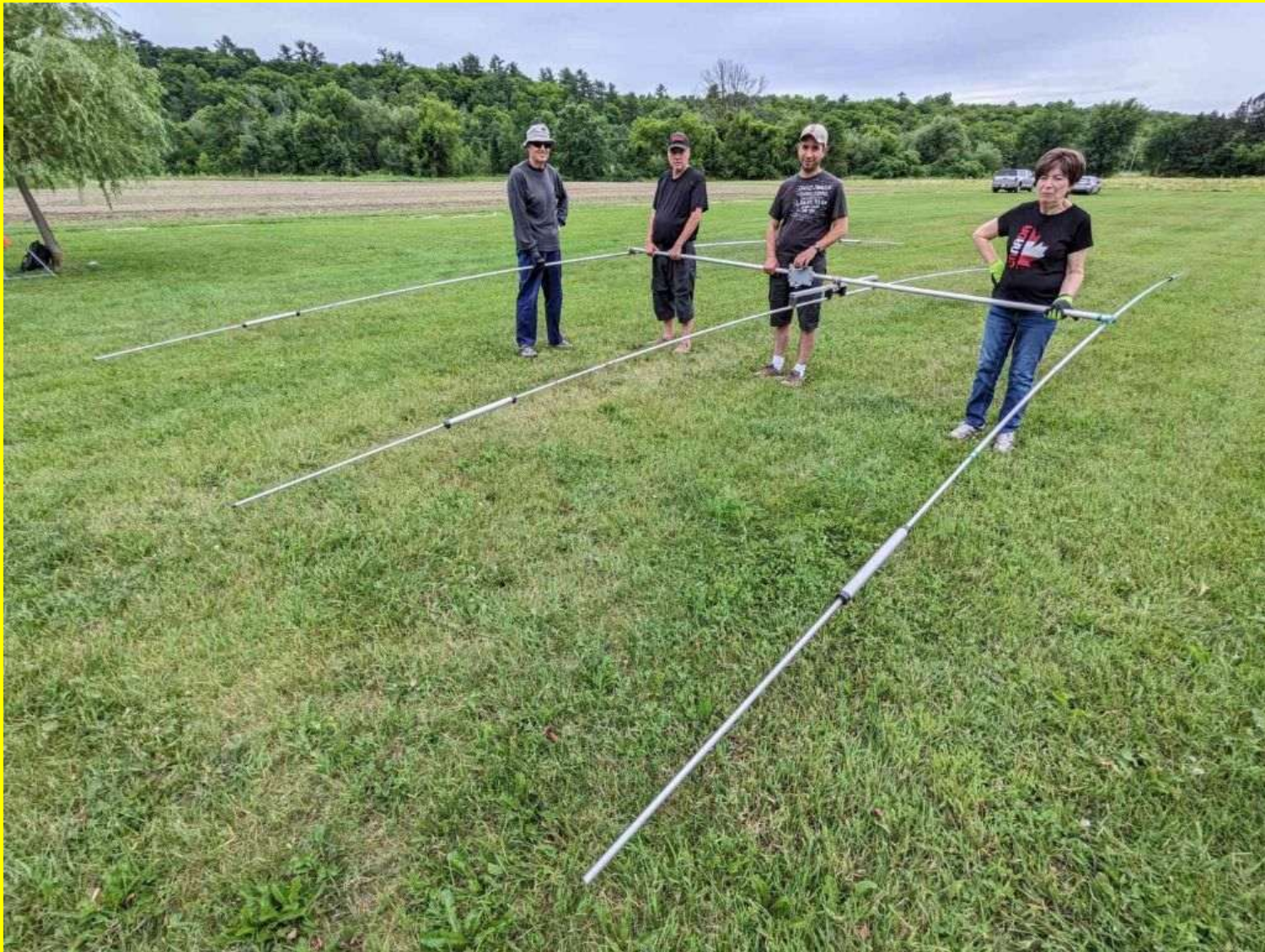
☒ Faster Escape Check

☐ Show Mini on Startup

Done

[Click for more info on rig to PC CW interfaces.](#)

**The TA33 tri band beam has been assembled
Trevor VE3TEC, Fern VA3LMA, Rick VE3RVV, & Nicole VE3GIQ**





**The TA33 is hoisted
aloft and guyed
straight and true**





**The 6 metre Beam
hoping for
Sporadic E
openings**

**VHF stations don't
increase your
Class count**

Up Goes the 43 foot vertical used on 80 M





**Norm VE3LC
resonating the
43' vertical on
80 m using a
base loading coil**



Norm VE3LC's EV Provides AC Power

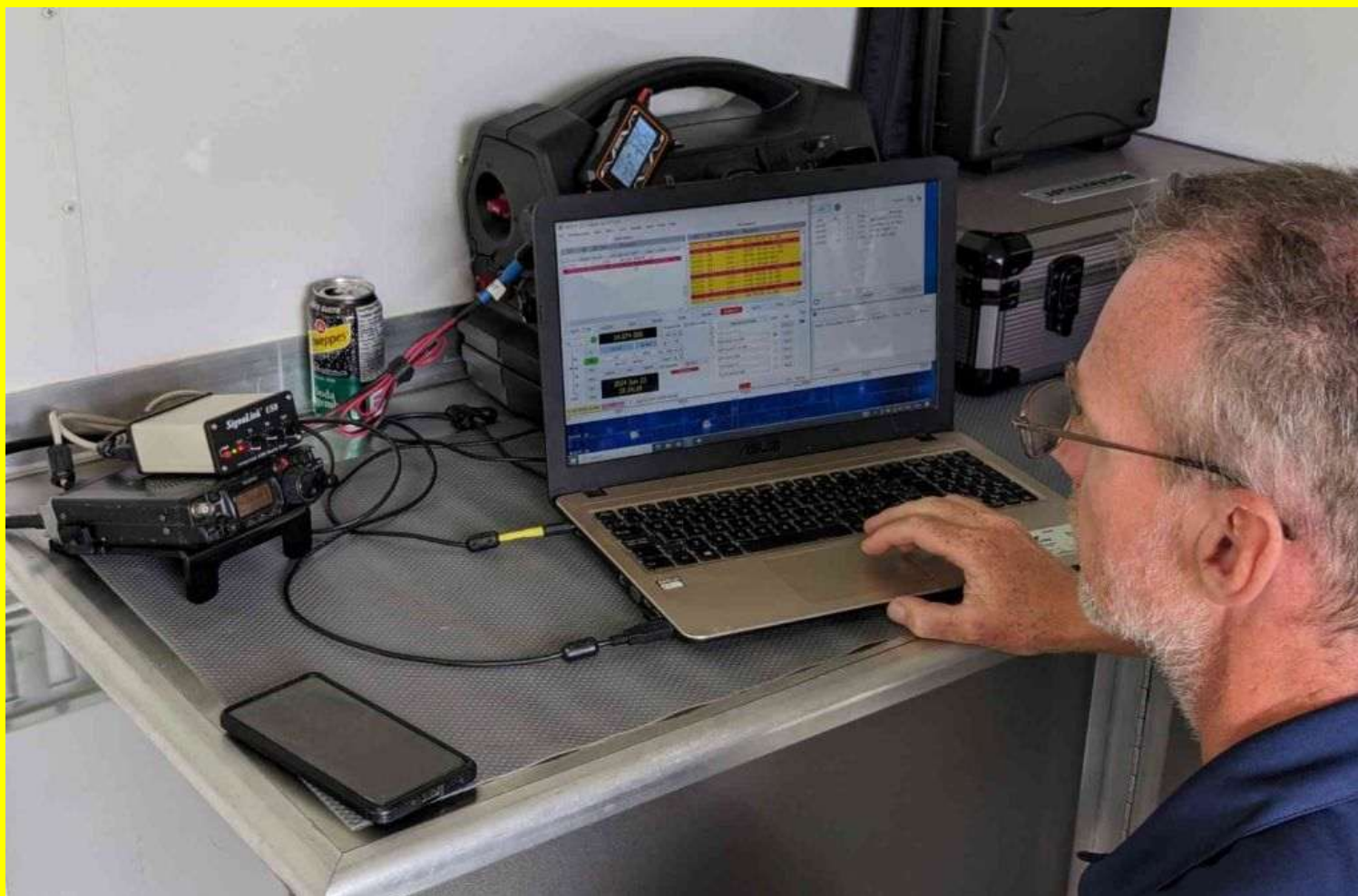
**Using an 800 Watt AC power inverter
powered by the 12 volt battery kept
alive and charged from the 28 kW/hr
big EV battery for 24 hours operational
period of Field Day.**



In the trailer: Rob ve3rxh, Norm ve3lc, Don va3zzi, & Will va3odw



Rob VE3RXH operating QRP FT-8



**Chris VA3CJO, J.D. VA2OJD, Rick VE3RVV, & Cal VA3ZLA
in the GOTA Tent**





Steve VE3MVK doing his own thing



Setting up the Public Information Table

2024 Score and Ranking for our QRP Operation

2A — Battery

Colorado QRP Club					
W0CQC (+KC0VFO)					
	1,063	5	22	11,440	CO
510 Radio Grp.					
N1A	945	5	6	10,300	WMA
QRP Pals					
K9A	966	5	5	10,110	WI
Wilsons Wonders					
WA7NCL	654	5	5	7,470	EWA
Ottawa Valley Mobile RC					
VE3JW (+VE3RAM)					
	327	5	15	4,140	ONE
Lanark North Leeds ARES					
VE3LCA	164	5	9	2,145	ONE
Boone and Hamilton Co. ARES					
K0KWO	104	5	9	1,545	IA

2A – Battery Class

5 Watts or less

Very limited competition

Only 7 Clubs in all N.A.

We were 1st in Canada!

OVMRC FIELD DAY 2019

Friday Setup Crew

VE3KTN, VE3OKD, VE3LC, VE3BOE, VE3TXB, VE3XEM, VE3EGY, VA2EEK, VE3RXH, VE3NZG



ALL PICTURES BY DAVE VE3ZZU



Rob Haddow shared an event.

19 May

Ottawa Valley Mobile Radio Club, Incorporated will be operating from the Canada Aviation and Space Museum for the ARRL Field Day 2019.

Listen out for us across the HF and VHF bands on CW, digital and phone.
#ARRLFD



SAT, 22 JUN

Field Day 2019

Canada Aviation and Space Museum - Ottawa

2 went · 1 interested

★ Interested

**Social Media gives
us bonus points
Thanks to:
Rob VE3RXH**



OVMRC
@VE3JW

Field Day 2019 - The Ottawa Valley Mobile Radio Club @VE3JW will be operating 2A from the Canada Aviation and Space Museum. Setup is on Fri 21 Jun, with operations taking place on Sat 22 to Sun 23 Jun. Listen out for us on HF, 6m and 146.520 MHz FM. #ARRLFD



8:36pm · 8 Jun 2019 · TweetDeck

||| Open Twitter Analytics

2 Retweets 6 Likes



OVMRC
@VE3JW

Flag flying proudly on our 80m vertical at #RACFD #arrlfd ready for many more contact and the race to 1400 hrs local!



7:59am · 23 Jun 2019 · TweetDeck

||| Open Twitter Analytics

1 Reply 4 Retweets 15 Likes

Rob's Tweets



OVMRC
@VE3JW

All set up and ready for Field Day at @avspacemuseum deVE3JW. #RACFD #ARRLFD



1:32pm · 22 Jun 2019 · TweetDeck

||| Open Twitter Analytics

9 Retweets 28 Likes

Bonus point for Orleans Star Article thanks to Nicole, VE3GIQ

Mobile Radio Club's annual field day a tremendous success

By Nicole Boivin
Ottawa Valley Mobile Radio Club

On June 22 and 23, the Ottawa Valley Mobile Radio Club (OVMRC) participated in a field day at the Canadian Aviation and Space Museum.

Each year at this time Amateur Radio Operators (HAMS) from across North America participate in an exercise to test long distance emergency communications. It is also a competition amongst radio clubs to see who can make the most contacts in the 24 hours of the event.

On the morning of June 24, the members of the OVMRC set up their short wave antennas and equipment in the field adjacent to the Canadian Aviation and Space Museum and 'got down to business' at 2 p.m.

Operators worked through the night to contact other amateurs across North America up to the cut off time of 2 p.m. on June 25.

We do not yet know the outcome of this year's competition, however, last year our club came second overall in Canada in our category.

With no hydro power, we used a

combination of generators and solar panels to power up our radio transceivers. We communicated by voice, digital radio, telegraph and by satellites.

The OVMRC is one of several clubs in the Ottawa area, with members mostly from Orléans and Gloucester. The event was opened to the public, and public participation was up this year. We had guided tours of our various stations, a setup where the public can try their hand at telegraphy and talk to someone far away on our GOTA station.

We were operating from a 32-foot trailer, with a 'Get On The Air' (GOTA) station under a tent. Several members of the public were able to make radio contacts from our GOTA station. The children in particular enjoyed trying to send their names using the telegraph setup.

On the opening day the Search and Rescue Service (SARS) made their trailer available for public access. Many of the SARS personnel are also qualified amateur radio operators.

Amateur radio is an exciting hobby with many diverse interest for those who are both technical and non-technical,



Members of the Ottawa Valley Mobile Radio Club are all smiles during their annual field day at the Aviation Museum. PHOTO COURTESY OF OVMRC

those who like to compete or simply enjoy talking to someone half way around the world. My specialty is providing communications for public events, such as the MS Bike Tour which is coming up on Aug 17-18.

The club teaches a course in amateur radio starting in September of each year.

To find out more about the hobby and our club, visit our website at www.ovmrc.on.ca. Who knows, you may just catch "the bug". We hope that you will join us next year on the fourth weekend in June when we expect to be back at the Canadian Aviation and Space Museum. As we amateurs say, until then 73.





**Norm VE3LC talks to
Councillor Laura Dudas**



Fred VE3LAF & Denny VE3OKD





Norm VE3LC with Wayne VE3QO



Barry VE3NA with Pete VE3XEM



Bryan VE3QN does duty at CW Station



Denny VE3OKD with Nicole VE3GIQ



Chris VE2MW comes through with a Satellite contact for FD – 100 Bonus Points.

- Satellite SO50 (FM Bird)
- Station worked VE2HEW
- 1B, Section QC



**Maurice-André
VE3VIG does
Sat – backup**

GOTA Operating Position



Questions ?